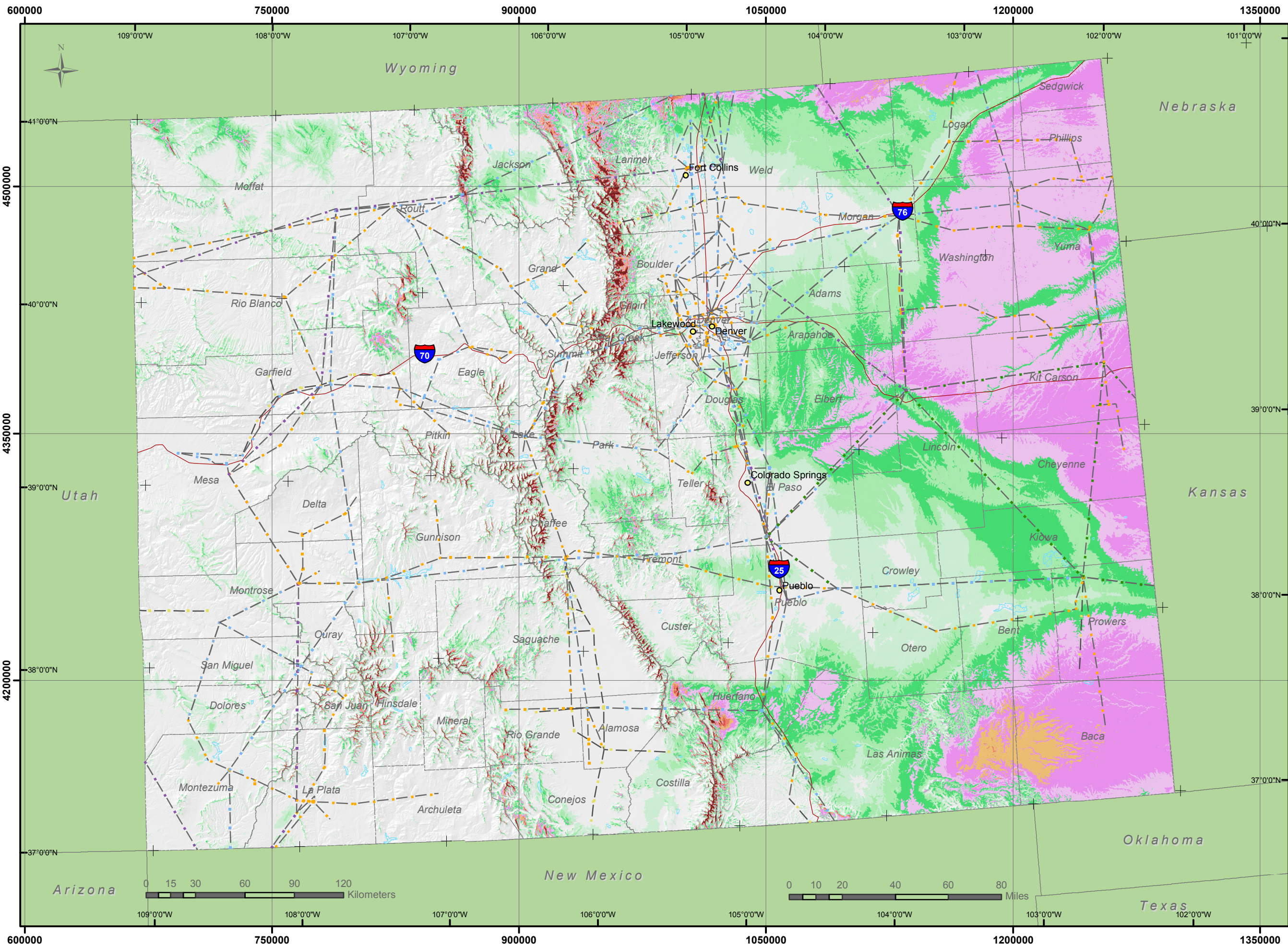


# Wind Resource of Colorado

## Mean Annual Wind Speed at 50 Meters



**Features**

- City
- Interstate Highway
- County Boundary
- Water Body

**Mean Speed at 50 m**

mph	m/s
< 12.3	< 5.5
12.3 - 13.4	5.5 - 6.0
13.4 - 14.5	6.0 - 6.5
14.5 - 15.7	6.5 - 7.0
15.7 - 16.8	7.0 - 7.5
16.8 - 17.9	7.5 - 8.0
17.9 - 19.0	8.0 - 8.5
19.0 - 20.1	8.5 - 9.0
20.1 - 21.3	9.0 - 9.5
> 21.3	> 9.5

**Generalized Transmission Line**

Category
Under 100 kV
100 kV-161 kV
230 kV-287 kV
345 kV
500 kV
735 kV +
Step-Up
DC Line



Projection: UTM, Zone 12N, WGS84  
 Spatial Resolution of Wind Resource Data: 200m  
 This map was created by AWS Truewind using the MesoMap system and historical weather data. Although it is believed to represent an accurate overall picture of the wind energy resource, estimates at any location should be confirmed by measurement.

The transmission line information was obtained by AWS Truewind from the Global Energy Decisions Velocity Suite. AWS does not warrant the accuracy of the transmission line information.